



# **MTV-100 MINITOUCH VOTE PANEL**

## **USER MANUAL**

**Covers MTV-100D, MTV-100F**

**Version 1.1**

**August 2016**

# MTV-100 MiniTouch Vote Panel User Manual

## Safety Precautions

### Caution

**Read Instructions:** Read and understand all safety and operating instructions before using the equipment.

**Retain Instructions:** The safety instructions should be kept for future reference.

**Follow Warnings:** Follow all warnings and instructions marked on the equipment or in the user information.

**Avoid Attachments:** Do not use tools or attachments that are not recommended by the equipment manufacturer because they may be hazardous.

### Warning

**Power Sources:** This equipment should be operated only from the power source indicated on the product.

**Servicing:** Refer all servicing to qualified service personnel. There are no user-serviceable parts inside. To prevent the risk of shock, do not attempt to service this equipment yourself because opening or removing covers may expose you to dangerous voltage or other hazards.

**Slots and Openings:** If the equipment has slots or holes in the enclosure, these are provided to prevent overheating of sensitive components inside. These openings must never be blocked by other objects.

### Copyright

This manual and the equipment, firmware and software described herein are copyrighted by **INTENT DIGITAL** with all rights reserved. Under the Copyright laws, the equipment firmware and software may not be copied in whole or in part without the written consent of **INTENT DIGITAL**, except in the normal use of any software to make backup copies. This manual or portions thereof may be copied for personal use only.

Copyright 2015, Intent Digital All Rights Reserved.

## CONTENTS

### 1.0 INTRODUCTION

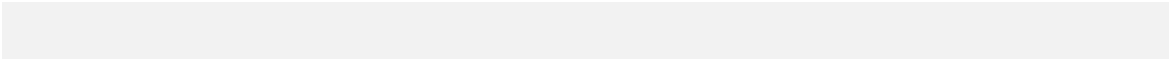
- 1.1 Overview
- 1.2 Features
- 1.3 Using This Manual
- 1.4 Contacting *INTENT DIGITAL*
- 1.5 Warranty

### 2.0 INSTALLATION & OPERATION

- 2.1 Getting Started
- 2.2 Switches & Indicators
- 2.3 Cabling & Connection

### 3.0 TECHNICAL INFORMATION

- 3.1 Vote Panel Specifications



## 1.0 INTRODUCTION

### 1.1 Overview

The MTV-100 MiniTouch Vote Panels offer simple touch based voting operation with the VoteLynx XLG Meeting Management System.

The panels feature Yes, No, Abstain, Make Motion, Second Motion and Request to Speak (RTS)/Mic buttons. RTS/MIC button operates in both discussion and request to speak modes as selected on the VoteLynx system. MiniTouch vote panels support variations of Yes/No labels, including Yea/Nay and Aye/Nay.

MTV-100 MiniTouch Vote Panels are available in two styles, both with 2.6" diagonal LCD touch displays. The MTV-100F is designed for in-desk mounting and fits into most single gang electrical openings. The MTV-100D is a desktop version for use in tabletop applications. Both models contain a configurable audio speaker to provide audio cues and prompts as desired.

The stylish, glossy metallic pewter finish of both panels creates an air of elegance for any professional meeting environment. Compact MiniTouch panels are perfect for use where space is limited on the meeting dais. Optional drive module VL-VP-OPT5 is available to control microphone LED light rings.

### 1.2 Features

- Simple touch voting operation
- Yes, No, Abstain, Motion and Request-to-Speak Microphone buttons
- Visual cues guide users through operation
- Vivid 2.6" TFT active matrix color LCD with white LED backlighting
- Configurable audio annunciator provides audio cues
- Desktop or flush mount using a single gang wall box
- Elegant glossy metallic pewter finish
- POE Ethernet IP interface connects vote panels to VoteLynx systems
- Three configurable general purpose I/O pins
- Optional driver module for microphone LED ring

### 1.3 Using This Manual

**Note:** Important information that you should read or be familiar with in order to understand the material being presented next.

**Tip:** A suggestion that will show a shortcut or specific information that will help you understand or best use the Controlynx system.



Indicates that an action on your part is required in the step by step process of configuring or operating the hardware or software. This may mean setting a jumper, moving the mouse or pressing a key on the keyboard.

# MTV-100 MiniTouch Vote Panel User Manual

## **1.4** **Contacting *INTENT DIGITAL***

### **Technical Support**

You may contact ***INTENT DIGITAL*** directly for technical support by phone, FAX or letter or e-mail. Please feel free to contact us at:

***INTENT DIGITAL Inc.***  
3104 E. Camelback Road  
Suite 445  
Phoenix, AZ 85016  
Voice: 602-404-0100  
Fax: 602-324-4629  
www.intentdigital.com  
www.votelynx.com

### **Comments and Suggestions**

We at ***INTENT DIGITAL*** would like to encourage you to send comments, questions and suggestions regarding our product line. Please feel free to contact us at the above address.

## **1.5** **Warranty**

For a period of one year from the date of purchase as shown on the sales invoice, ***INTENT DIGITAL*** warrants to the original purchaser that the VoteLynx module, (the "Product") is free from defects in material and workmanship when subjected to normal use and service. If during this one year period, such a defect due to faulty workmanship or materials should occur, the Product will be repaired or replaced (at ***INTENT DIGITAL's*** discretion) free of charge after the Product is returned, shipping prepaid, to ***INTENT DIGITAL***. Units returned for warranty service must be shipped prepaid to ***INTENT DIGITAL*** for repair or replacement.

Purchaser's exclusive remedy, and ***INTENT DIGITAL's*** sole obligation for any and all causes of action, claims, loss, property damage, personal injury, or liability, resulting from or related to any malfunction, interruption, or loss of use of the Product or related system is limited to the repair or replacement of the Product under the limited warranty provided herein. ***INTENT DIGITAL*** shall not be liable for any consequential damages (even if advised of the possibility of the same) or incidental liability or loss. In no event under any legal theory of liability shall ***INTENT DIGITAL's*** liability for any and all claims arising under or related to this Agreement exceed the purchase price of the Product.

## 2.0 INSTALLATION & OPERATION

### 2.1 Getting Started

#### SUPPLIED HARDWARE AND CABLES

Check to make sure that you have received the following equipment and accessories with each Vote Panel.

Desktop version

- MTV-100D Desktop Vote Panel

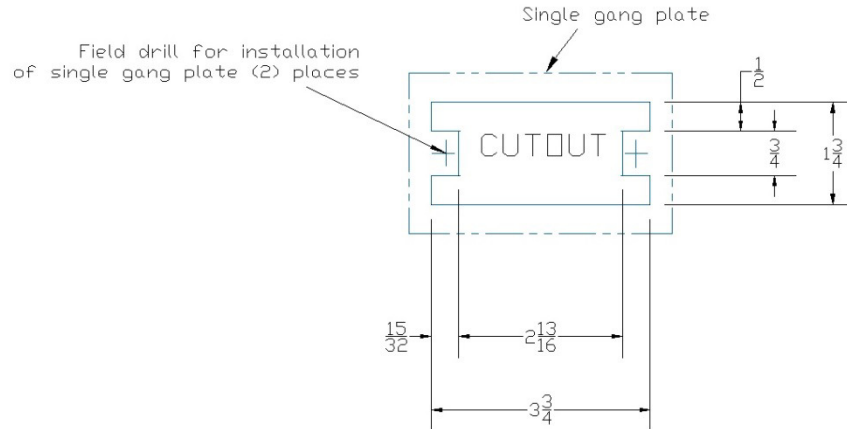
Flush mount version:

- MTV-100F Flush Mount Vote Panel
- (1) Removable two conductor power cable for 5 volt powered versions
- (2) Black Philips Flat Head Mounting Screws

If any of these items is missing please contact **INTENT DIGITAL** immediately for replacement.

#### FLUSH MOUNTING VOTE PANEL

The flush mount VoteLynx Vote Panel is designed to mount in a single gang electrical box or a cutout on a flat tabletop surface using two mounting screws. The recommended low voltage mounting bracket is an Arlington LVN1. The panel cutout pattern for the MTV-100F flush mount vote panel is shown below.



# MTV-100 MiniTouch Vote Panel User Manual



MTV-100F Flush Mount



MTV-100D Desktop

## 2.2 Switches & Indicators

### FRONT PANEL LCD SCREEN

**Vote Buttons:** Yes, No and Abstain vote buttons. Buttons will change from disabled gray to dull colors when voting is activated. Pressing the desired vote will cause the button to go bright colored.

**Motion Buttons:** Make Motion and Second Motion buttons. Buttons will change from disabled gray to dull colors when motions are activated. Pressing the desired motion will cause the button to go bright colored.

**RTS/MIC:** Dual function Request to Speak /Microphone button. Pressing the button while In request to speak mode will cause the button to start flashing with the text changing to “In Queue”. When the member is recognized in the Request to Speak system the button will glow steady green and the label will say “MIC ON”. With the System set to Discussion mode, pressing the button will alternate between RTS/MIC and MIC ON.

### REAR CHASSIS SWITCHES AND INDICAORS

**Reset Switch:** Press this switch to reset the timer display during maintenance procedures.

## 2.3 Cabling and Connectors

### EQUIPMENT CONNECTIONS:

The MTV-100D vote panel ships with Ethernet power cable attached. A DC power cable is also attached for panels that are to be powered by external 5 volt power supply. The power cable connector is a 2.1 mm plug with the center pin being the positive conductor.

The MTV-100F flush mount unit has a removable Phoenix style plug for power connection. The table below shows the connections to the two pin terminal connector.

Terminal Pin	Connection
1	+5 Volts
2	0 Volts

## 3.0 SPECIFICATIONS

### 3.1 MTV-100 MiniTouch Vote Panel Specifications

<b>Display:</b>	2.6" Diagonal TFT LCD
<b>Screen Resolution:</b>	400 x 240 pixels
<b>Brightness:</b>	180 nits, LED backlight
<b>LCD Colors:</b>	65,536 colors (16 bit)
<b>Network:</b>	MTV-100F: 10/100 Base-T Ethernet on RJ-45 connector MTV-100D: Attached 10 foot 10/100 Base-T Ethernet cable
<b>Audio:</b>	Variable frequency piezoelectric annunciator
<b>Mounting:</b>	MTV-100F: Single gang wall plate MTV-100D: Desktop
<b>Dimensions (mm):</b>	MTV-100F: 114.5 W x 70 H x 35 D (4.50" W x 2.75" H x 1.38" D) MTV-100D: 102 W x 71 H x 106 D (4.00" W x 2.80" H x 4.17" D)
<b>Weight:</b>	MTV-100F: 0.12 Kg MTV-100D: 0.23 Kg
<b>Operating Temperature:</b>	0°C to 50° C
<b>Storage Temperature:</b>	-10° C to 60° C
<b>Supply Voltage:</b>	IEEE-802.3af POE or external 5 Volts DC
<b>Supply Current:</b>	Version 1.0: 370mA Version 1.3: 300mA w/external supply
<b>Power Connection:</b>	MTV-100F: 2-pin removable Phoenix style 3.81 mm terminal plug for 5 volt operation MTV-100D: Attached 10 foot cable with 2.1 mm DC coaxial power jack for 5 volt operation

Specifications subject to change without notice